

Product Data Sheet

anti-human S100 calcium binding protein A4 monoclonal antibody

Product information

Catalog Number:	GM-0908
Clone:	NJ-4F3
Description:	purified monoclonal mouse antibody
Specificity:	anti-human S100 calcium binding protein A4 (S100 A4)
Isotype:	IgG1
Purification:	Protein G
Storage:	short term: 2°C - 8°C; long term: -20°C (avoid repeated freezing and thawing)
Concentration:	2 mg/ml
Buffer :	phosphate buffered saline, pH 7.2
Immunogen:	genetic immunisation with cDNA encoding S100 A4
Selection:	based on recognition of the complete native protein expressed on transfected mammalian cells

Working dilutions

Flow cytometry:	1.2 µg/10 ⁶ cells
CELISA:	1:200 - 1:400
ELISA:	1:200 - 1:400

For each application a titration should be performed to determine the optimal concentration.

Specificity testing by flow cytometry

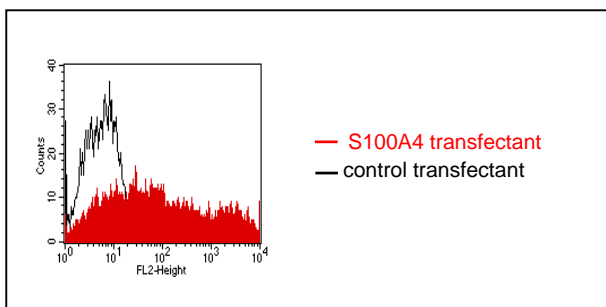


Fig.1: FACS analysis of BOSC23 cells using NJ-4F3 Cat.# GM-0908. BOSC23 cells were transiently transfected with an expression vector encoding either S100 A4 (red curve) or an irrelevant protein (control transfectant: black curve). Binding of NJ-4F3 was detected with a PE-conjugated secondary antibody. A positive signal was obtained only with S100 A4 transfected cells.

For research use only. Not for diagnostic or therapeutic use.

GENOVAC will not be responsible for violations or patent infringements which may occur with the use of our products.

SDS-PAGE analysis of NJ-4F3

The antibody was purified by protein G affinity chromatography from cell culture supernatants and verified by SDS-Page (Fig.2).

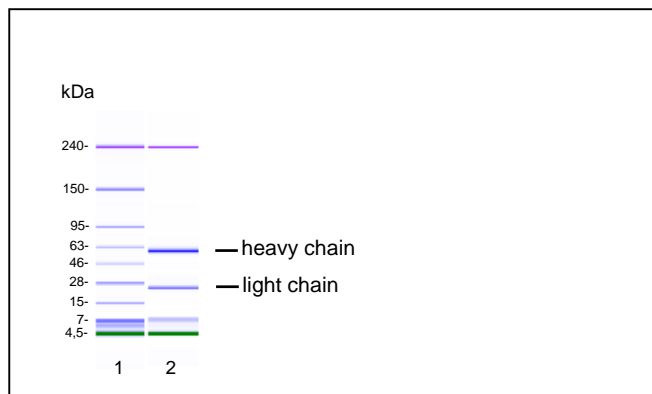


Fig.2: SDS-PAGE analysis of purified NJ-4F3 monoclonal antibody. Lane 1: molecular weight marker, Lane 2: 2 µg of purified NJ-4F3 antibody. Proteins were separated by CGE (capillary gel electrophoresis, Agilent 2100 Bioanalyzer). Internal control bands (240 kDa / 7 kDa / 4,5 kDa).

Background

S100 calcium binding protein A4 (S100A4) is a member of the S100 family of calcium-binding proteins that contain two Ca(2+)-binding sites including a canonical EF-hand motif. S100 proteins are localized in the cytoplasm and/or nucleus of a wide range of cells. S100A4 interacts with cytoskeletal proteins and enhances metastasis of several types of cancer cells. It is secreted by unknown mechanisms, thus, paracrinely stimulating a variety of cellular responses, including angiogenesis and neuronal growth (1). S100A4 has been shown to be a prognostic marker in a number of human cancers, including esophageal-squamous cancers, non-small lung cancers, primary gastric cancers, malignant melanomas, prostate cancers, bladder cancers, and pancreatic carcinomas. The universality of S100A4 expression in a variety of cancers illustrates the potential use of S100A4 as a marker for tumor metastasis and disease progression (2).

References

1. **Schneider M, Hansen JL, Sheikh SP (2008).** S100A4: a common mediator of epithelial-mesenchymal transition, fibrosis and regeneration in diseases? *J Mol Med* Mar 6
2. **Garrett SC, Varney KM, Weber DJ and Bresnick AR (2006).** S100A4, a Mediator of Metastasis. *J Biol Chem*, 281(2): 677-680

For research use only. Not for diagnostic or therapeutic use.

GENOVAC will not be responsible for violations or patent infringements which may occur with the use of our products.